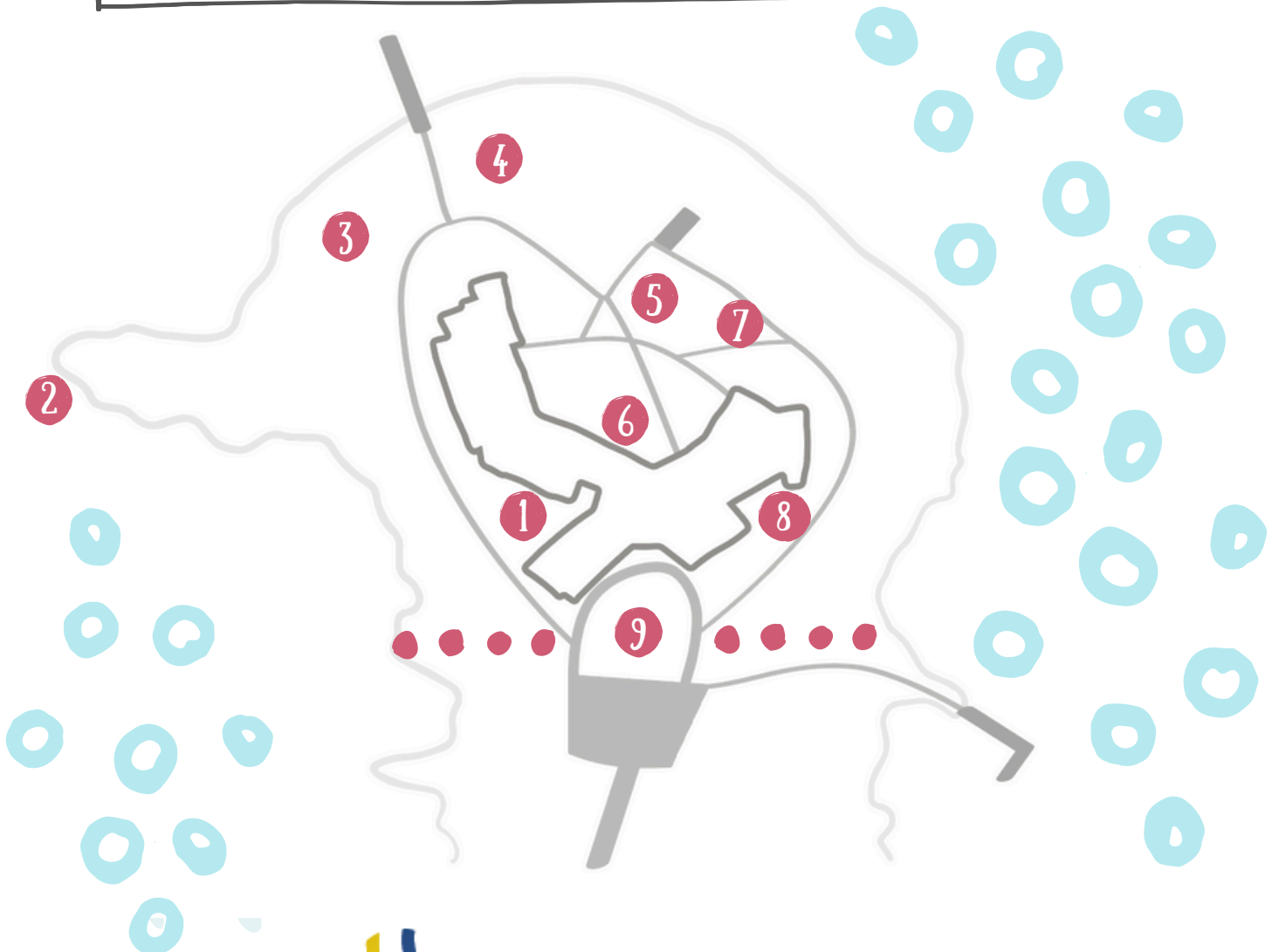




ART TREASURE HUNT ON HANAHOLMEN!

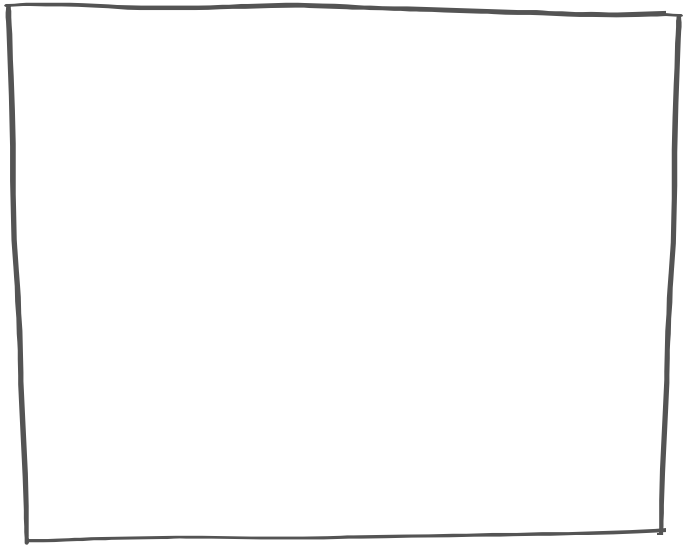
Come along for an adventure in Hanaholmen Art Park! Draw new pieces of art, take photos and contemplate on what the art wants to tell you!





Erik Wennerstrand's artwork **The growth of the tree is a clockwork performance** is a strong symbol of growth. Time passes, the clock ticks and the tree grows its roots firmly in the ground.

- Find the globe, the star and the tree.
- What would the work look like if it were a person? Draw!
- Can you imagine how the passage of time feels from the tree's perspective?



Standing in the sea, Anna Uddenberg's artwork **Free fall** depicts a woman riding a flyboard. The sculpture is a bronze goddess of freedom of the modern times.

- Why is the sculpture in the water?
- The sculpture is a woman. Is it visible?
- How does Free Fall differ from traditional female sculptures?
- Can a person be free? What does freedom mean to you?



The **Mushroom** by Gunzi Holmström is an interactive artwork that picks up communication between a fungus mycelium and tree roots. These impulses are turned into a mysterious music.

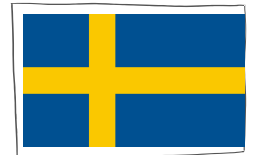
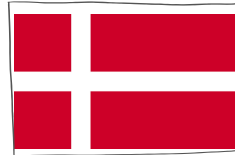
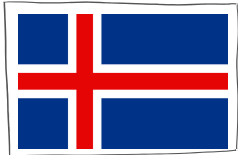
- Close your eyes for a moment and listen. What do you hear and how does it sound?
- Can you communicate with other beings than humans? How?
- Imagine mushroom mycelium and tree roots communicating. What do they say? You can also make a comic about the discussion.
- When discussing with a friend, do you prefer talking or listening?



Jeppe Hein's artwork **Fragmented Circle** reflects its surroundings and offers surprising angles.

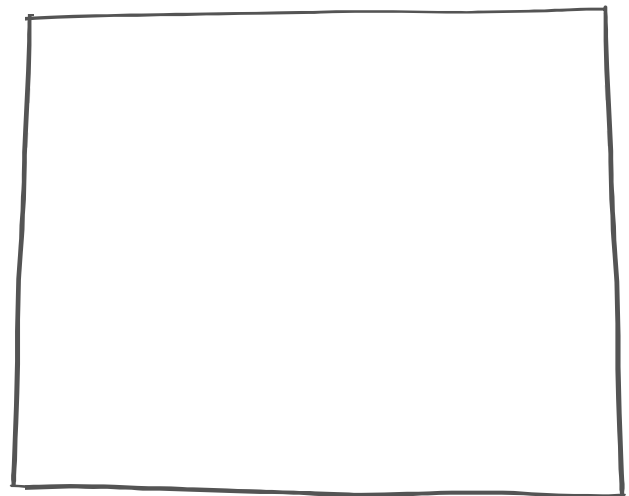


- Look at yourself in the mirror. How many noses do you see? Take a selfie from a new and exciting angle.
- Jeppe Hein comes from Denmark. Do you know the flags? Write the name of the countries under the flags.



Where is Børre Sæthre's light artwork **ΔT [Delta T]**? Tip: look up! According to the artist, the artwork has landed in a treetop as if it had fallen from the sky and from there it sends a signal back to outer space.

- What different signals do you know?
Draw or write.
- What tools can be used to send signals?
- How and what can you communicate with art?



At Hanaholmen's yard, you will find Kauko Räsänen's three large bronze figures: **The Crowned One**, **Bird Girl** and **The Acrobat's Morning**.



- Can you find a bird?
- Try to assume the same body position as one of the statues.
- What would the fourth figure look like? Draw or photograph yourself as the sculpture.
- Do the sculptures have different characters? How would you describe them?
- Why do the sculptures have no clothes?
- What can you signal with nudity?



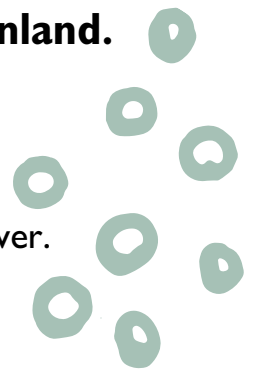
Lars-Gunnar Nordström's sculpture, *Dimensional Constellation*, from 1978, is located on the site for temporary artworks in Hanaholmen Art Park.

- How many individual surfaces do you find in the work?
- What is the direction of the work? Does it rise up into the sky or does it bore down into the ground?
- The artist loved jazz. Can you find the influence of music in the work?



Located on the northwestern shore of Hanaholmen, the artwork *Part of something* by Mirza Cizmic symbolizes cooperation between Sweden and Finland.

- How many colored puzzle pieces are there in the artwork?
- What is your favorite color?
- Do you think puzzle is an apt symbol for collaboration? Motivate your answer.
- Why is one of the pieces not inside the outline?
- Do you feel a need to fit into some form?



The large work stretching from shore to shore consists of two separate works of art: *Forwards*, by the Finnish artist Kaarina Kaikkonen, and *Low Ridge* by the Swedish artist Elisabet Sagefors.



- How many jackets can you find? Where are they coming from and where are they going?
- Can you find both artworks? How do they differ from each other? What do they have in common?
- The works were completed in 2009. What thoughts do they evoke in the current world situation?



See you at Hanaholmen!

Hanaholmen - Swedish-Finnish Cultural Centre
Hanasaarenranta 5/Hanaholmsstranden 5
FI-02100 Espoo/Esbo
+358 (0)9 435 020 www.hanaholmen.fi